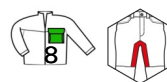


Ref. 5BAS150

Bermuda

Bermuda



### THE +

**COMFORT:** majority cotton + raised waistband + crotch panel  
**FUNCTIONAL:** multi-pockets/loops + hidden metal parts  
**ROBUST:** triple topstitching  
**FASHION:** cut-outs and fancy details

### PURCHASE PACKAGING

Ref.	Size	Carton
5BAS15000L	L	10
5BAS15000M	M	10
5BAS15000S	S	10
5BAS1500XL	XL	10
5BAS1502XL	2XL	10
5BAS1503XL	3XL	10
5BAS1504XL	4XL	10
5BAS1505XL	5XL	10
5BAS1506XL	6XL	10

*Some sizes may only be available in certain countries*

### SALES PACKAGING



Individual pack

*See also*

### VARIANTS

5BAS320



### SECTORS

Light Industries

Infrastructure, building industry

DIY

Transport (excluding manufacturing) and logistics

## FABRICS

Color	Anthracite
Color 2	Lime
Material	TWILL: 60% Cotton / 40% Polyester - 270g/m2
Material 2	OXFORD: 100% Polyester - 600D

## TECHNICAL FEATURES

<b>Belt</b>	Elasticated belt on the sides + Loops Back extension	<b>Crotch</b>	Crotch gusset
<b>Pockets</b>	2 western pockets / 2 back pockets / 1 zipped thigh pocket + "garage" / 1 cargo pocket with reinforced gusset + Multi- Compartments / 1 ruler pocket with reinforced gusset / 1 wide pocket on the side and floating on the bottom	<b>Legs</b>	Knee length
<b>Loop</b>	1 hammer loop / 1 tool loop	<b>Finishing details</b>	Details in contrasting colour / Triple topstitching
		<b>Cut</b>	Regular fit

STANDARD(S)

RETAILER STAMP