

Ref. **9THOH10**

Specialties

High

High shoes



S3



The +

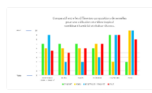
*Resistance to hydrolysis
(tested by CTC France).

*Value for money.

PURCHASE PACKAGING

Ref.	Size	Carton
9THOH10038	38	6
9THOH10039	39	6
9THOH10040	40	6
9THOH10041	41	6
9THOH10042	42	6
9THOH10043	43	6
9THOH10044	44	6
9THOH10045	45	6
9THOH10046	46	6
9THOH10047	47	6

Some sizes may only be available in certain countries



*** Qualité de la semelle extérieure en polyuréthane et polyéthylène**

Le graphique ci-dessous illustre la résistance à l'abrasion de la semelle extérieure en polyuréthane (PU) et en polyéthylène (PE) de la chaussure THORIUM par rapport à une semelle extérieure conventionnelle en polyuréthane (PU) sur différents types de surfaces (Ciment, Béton, Asphalte, Gravier, Sable, Boue, Neige, Glace, Eau, Huile, Graisse, Acier, Céramique, Verre, Plastique, Bois, Pierre, etc.).

Le polyéthylène (PE) offre une résistance à l'abrasion supérieure à celle du polyuréthane (PU) dans la plupart des conditions, en particulier sur les surfaces rugueuses et abrasives. La semelle THORIUM en PE est donc plus durable et résistante à l'usure que la semelle conventionnelle en PU.

DESCRIPTION

THORIUM is a shoe designed to optimize its durability against heat and humidity.

The special formulation of its outsole provides greater resistance to natural aging than a conventional polyurethane outsole.

It is resistant to hydrocarbons and slipping on ceramic and steel floors.

THORIUM model is equipped with a steel toe cap and midsole for protection against puncture or falling heavy objects.

SECTORS

Infrastructure, building industry

Construction - finishing work

DIY

Transport (excluding manufacturing) and logistics

Services and distribution

TECHNICAL FEATURES

Color	Black	Main assembly	Injected
Weight	585 g	Closing	Lacing closure
Upper	Full grain leather	Lining	Moisture wicking non-woven membrane
Toecap	Steel		
Puncture resistant sole	Steel		
Midsole	PU		
Outsole	PU		
Insole	Textile and foam, removable		

INSTRUCTION FOR USE AND STORAGE

Instructions for use

These shoes can be perfectly preserved. Before any use, effect of a visual inspection is perfect. It is advisable to choose the appropriate model for the specific requirements of your workplace.

Storage instructions

Place the shoes, when not in use, in a dry, clean and airy place. The time influences all materials and even if only first class raw materials have been used, storage for longer than 3 years is not recommended.

Washing instructions

Regularly clean the shoes by using brushes, cleaning clothes.

STANDARD(S)

This shoe conforms to the personal protective equipment model covered by the EC type-examination certificate 0075/1747/161/06/23/0946

Delivered by CTC (0075) 4 rue Hermann. Frenkel 69367 Lyon Cedex 07 France



EPI CAT. II

EN ISO 20345:2022

S3

Safety shoes

S3 Basic requirements: a 200 Joule impact and 15 000 Newton compression resistant toe-cap + Closed heel + Antistatic shoe 0,1M? A < 1000 M? + Fuel and oil resistant contact outsole + Energy absorbing heel E ? 20 Joules + Puncture resistant midsole / Resistant to a 1100 Newtons pressure + Water penetration and absorption resistant upper + Spiked outsole + Puncture resistant midsole

SR

Resistance to slippage (ceramic floor + oil)