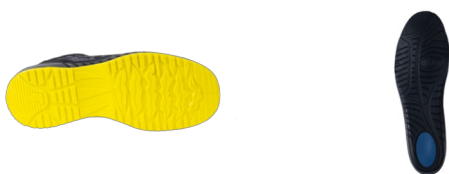


Ref. **9SWIL10**

Multipurpose

Low

Low shoes



### The +

- \*Soft PU/PU outsole: cushioning and comfort.
- \*Raised heel: stability on ladders.
- \*Wide cleats and flex lines: optimized adaptability to the ground.
- \*Polyester upper mesh: excellent breathability (laboratory tested).

### PURCHASE PACKAGING

Ref.	Size	Carton
9SWIL10035	35	6
9SWIL10036	36	6
9SWIL10037	37	6
9SWIL10038	38	6
9SWIL10039	39	6
9SWIL10040	40	6
9SWIL10041	41	6
9SWIL10042	42	6
9SWIL10043	43	6
9SWIL10044	44	6
9SWIL10045	45	6
9SWIL10046	46	6
9SWIL10047	47	6
9SWIL10048	48	6

*Some sizes may only be available in certain countries*

### DESCRIPTION

CLAW SWIFT is a lightweight, flexible and breathable safety sneaker. With a polyester upper and nubuck reinforcement, CLAW SWIFT ensures optimal breathability and durability in dry environments. Its low density PU/PU outsole guarantees all day comfort. Its aluminum / composite protection system contributes to its sporty look.

### SECTORS

Light Industries

Regional/public authorities

Maintenance

Construction - finishing work

DIY

Transport (excluding manufacturing) and logistics

Services and distribution

**TECHNICAL FEATURES**

Color	Yellow	Insole	PU Foam, removable, with shock absorber
Color 2	Black	Reinforcement location	Front
Weight	610 g	Lining	Breathable 3D mesh
Upper	Polyester mesh	Defined heel	
Toecap	Aluminium		
Puncture resistant sole	Textile		
Midsole	PU		
Outsole	PU		

**INSTRUCTION FOR USE AND STORAGE**

**Instructions for use**

These shoes can be perfectly preserved. Before any use, effect of a visual inspection is perfect. It is advisable to choose the appropriate model for the specific requirements of your workplace.

**Storage instructions**

Place the shoes, when not in use, in a dry, clean and airy place. The time influences all materials and even if only first class raw materials have been used, storage for longer than 3 years is not recommended.

**Washing instructions**

Regularly clean the shoes by using brushes, cleaning clothes, the operation frequency should be stated according to the workstation and carry out a periodic upper treatment with an adequate gloss containing grease, wax, silicone, etc

**STANDARD(S)**

This shoe conforms to the personal protective equipment model covered by the EC type-examination certificate **0075/1747/161/07/22/1303 EXT 02/07/22**

Delivered by CTC (0075) 4 rue Hermann. Frenkel 69367 Lyon Cedex 07 France



EPI CAT. II

EN ISO 20345:2011

S1P

Safety shoes

**S1P** Basic requirements: a 200 Joule impact and 15 000 Newton compression resistant toe-cap + Closed heel + Antistatic shoe 0,1M? A < 1000 M? + Fuel and oil resistant contact outsole + Energy absorbing heel E ? 20 Joules + Puncture resistant midsole / Resistant to a 1 100 Newtons pressure

SRC

Slip resistant outsole on ceramic or steel floor with dilute soap solution or glycerol

ESD

Electrostatic discharge shoe (CEI EN 61340-4-3 standard)

COVERPERF - Breathability



Shoes tested in a certified laboratory (CTC) offering excellent breathability. Removal of perspiration above 4g/h.

COVERPERF - Damping



Shoes tested in a certified laboratory (CTC) offering excellent damping. Over 25% of the impact force is absorbed by the sole.